

SCARBOROUGH HIGH SCHOOL RENOVATION

COMMUNITY MEETING | SEPTEMBER 24, 2015



PROJECT DESCRIPTION

- The 2012 bond program is grounded by the promise to provide 21st century learning environments for our students.
- Scarborough High School is committed to creating a safe and nurturing learning environment that promotes academic and social excellence for all students.
- College and career readiness is a key priority for Scarborough High School and HISD.

GUIDING PRINCIPLES

- Scarborough High School will partner with parents and community members to engage each student with a variety of rigorous and relevant academic experiences. We will cultivate and produce academically, emotionally, socially, productive, and globally competitive citizens.
- Scarborough High School will transform into the college and career readiness school of choice for students in this community and the surrounding communities. Furthermore, we will provide a safe environment for both students and staff, so a strong academic education happens in conjunction with great extracurricular activities.





FLEXIBILITY

21st century teaching demands flexible spaces

WE APPROACH FLEXIBILITY THROUGH:

- MULTIPLE USE SPACES
- MOVEABLE BOARDS
- LEARNING CENTERS
- BREAKOUT LEARNING STATIONS



COLLABORATION

teamwork is fundamental to 21st century education

WE ENCOURAGE COLLABORATION THROUGH:

- COMMON LEARNING AREAS
- GROUP STUDY SPACES
- COLLABORATIVE FURNITURE DESIGN



LIGHT

the quality of light impacts the quality of the learning environment

WE EMBRACE LIGHT THROUGH:

- NEW STOREFRONT GLAZING
- MODERN FIXTURES
- EMPHASIS ON EXISTING COURTYARDS



COLOR

vibrant colors improve mood and increase energy

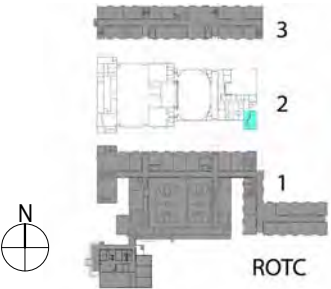
WE PROVIDE COLOR THROUGH:

- NEW VIBRANT COLOR PALETTE
- NEW PAINT THROUGHOUT
- NEW FLOORING
- GRAPHICS

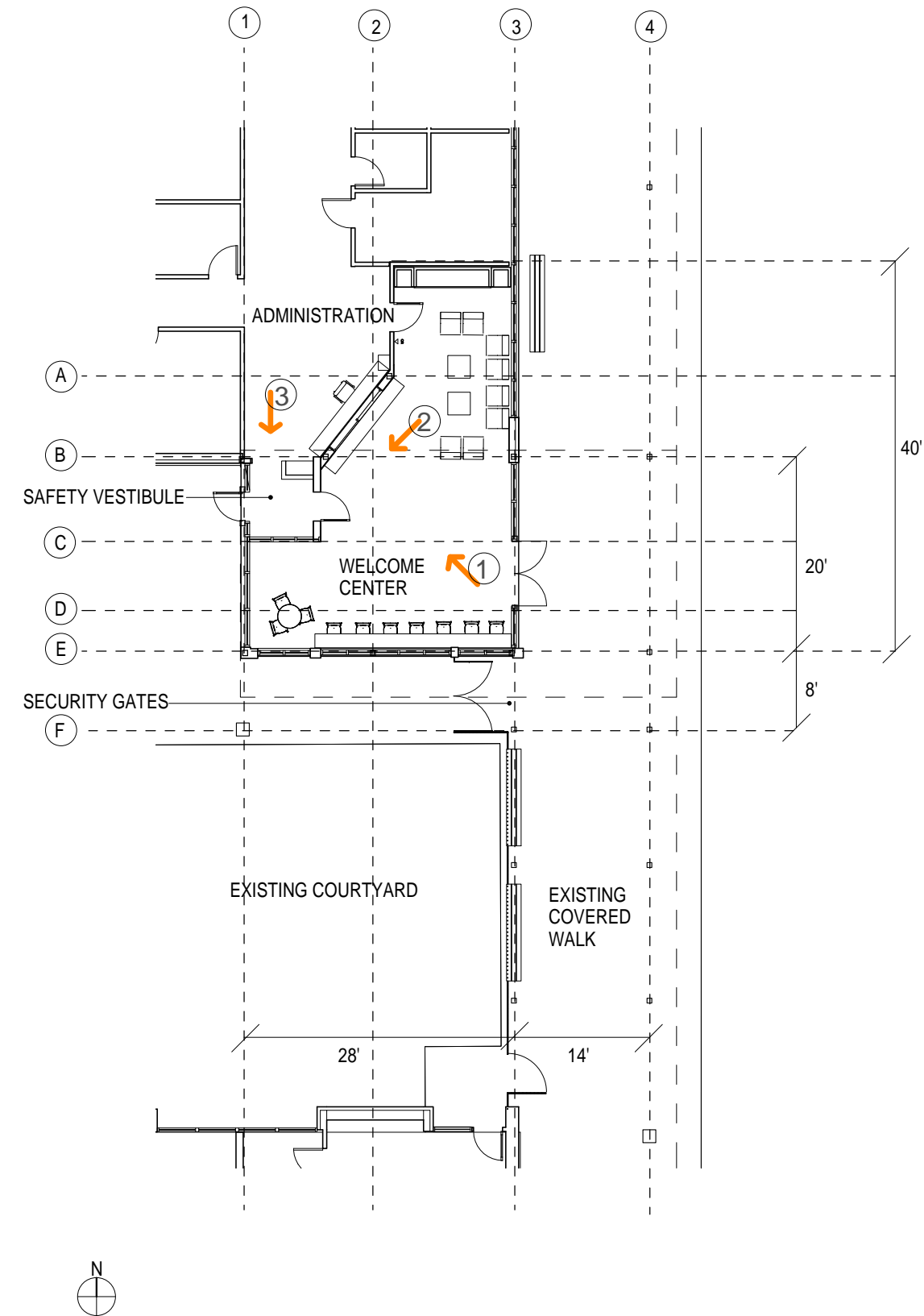
This aerial map illustrates the layout of a school campus with various renovation projects highlighted. The map includes the following callout boxes and their associated areas:

- CLASSROOM RENOVATIONS & TECHNOLOGY UPGRADES:** Indicated by arrows pointing to BUILDING 1, BUILDING 2, and BUILDING 3.
- SECURITY UPGRADES:** Includes Key Cards, Cameras, Gates, and Security Vestibule. Indicated by an arrow pointing to the entrance area near the Welcome Center.
- WELCOME CENTER:** Indicated by an arrow pointing to a small blue rectangular area.
- ATHLETICS:** Includes Tennis Court Upgrades, Baseball Field Dugout & Storage Renovations, Soccer Field Upgrades, and Weight Room Renovations. Indicated by arrows pointing to the green athletic fields and the teal-colored area.

The map also shows surrounding streets: Antoine Dr, Libbey Dr, Costa Rica Rd, Georgi Ln, Donna Lynn Ct, and Chantilly Ln. A scale bar indicates 551 ft, and the Google Earth logo is visible in the bottom right corner.

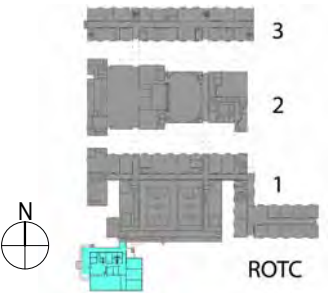


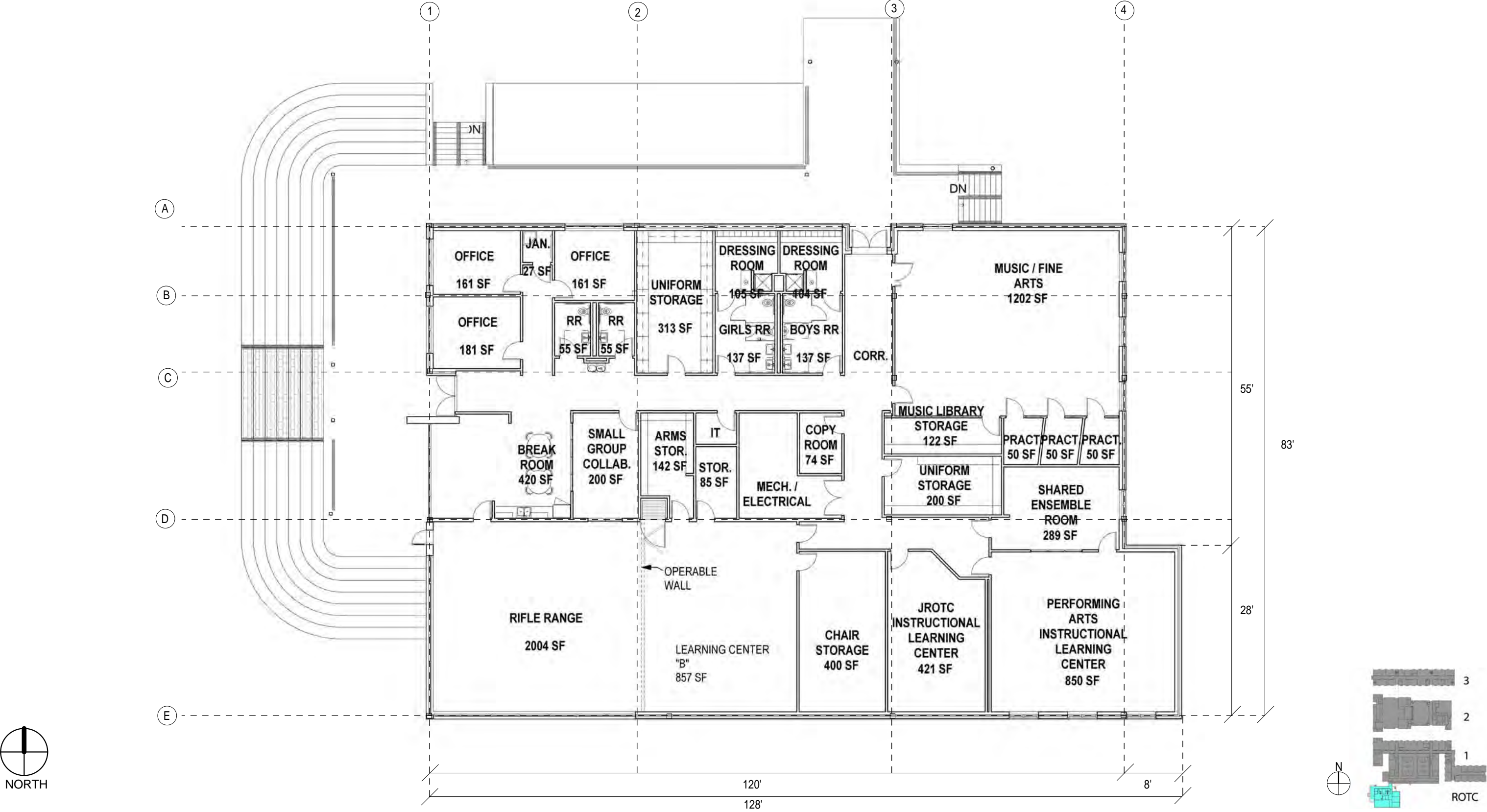
PROPOSED NEW WELCOME CENTER - FLOOR PLAN



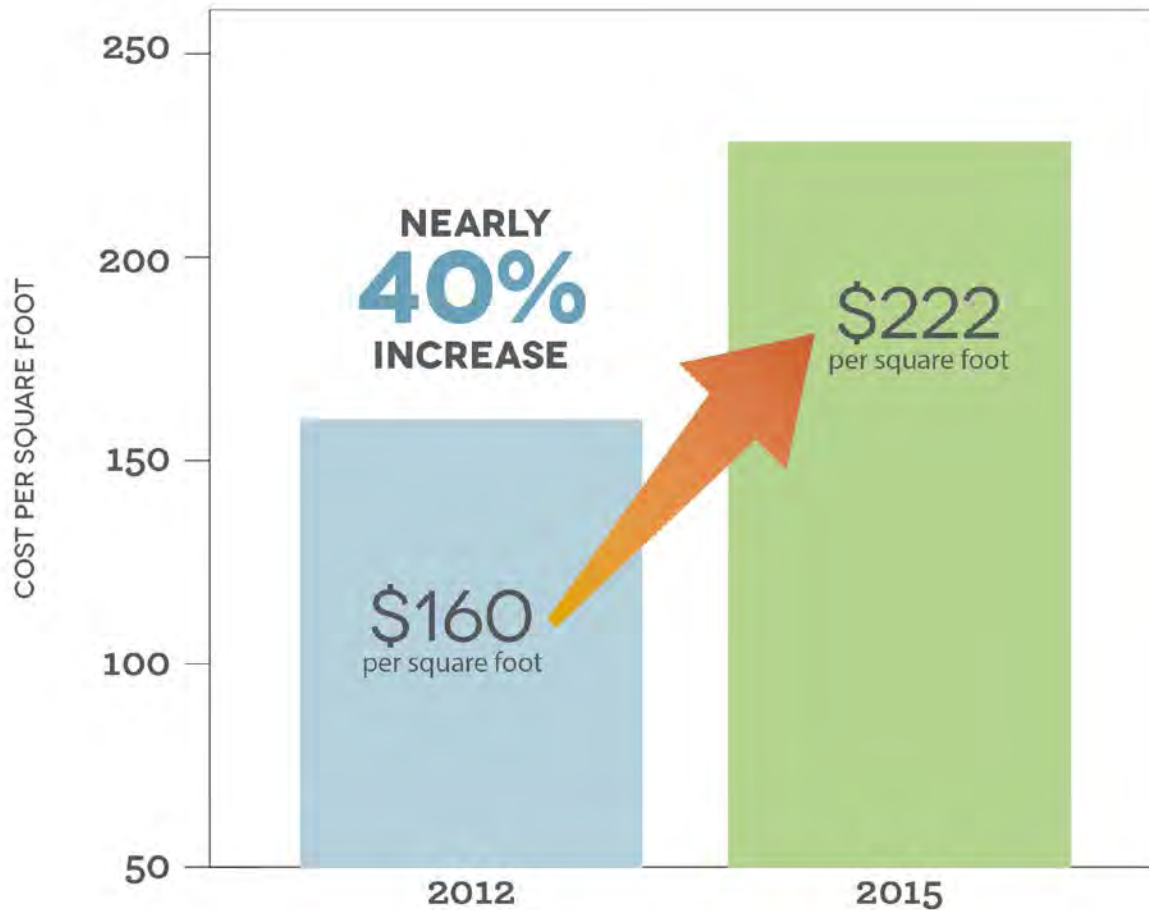
NOTE: WELCOME CENTER FLOOR PLAN WILL INCREASE WITH PROPOSED ADDITION TO 1,060 S.F.







Construction costs in Houston



HISD is working to mitigate a sharp increase in construction costs.